

# Annual Report 2016

The 2016 fiscal year excitedly brought about the change of our brand and name from the Maternal, Child and Family Health Coalition to Generate Health STL. This change allows us to better articulate our ability to accelerate progress in improving birth outcomes, promote healthy families and build healthy communities by uniting and mobilizing the region.



## 2016 Highlights

**220** COMMUNITY Listening Sessions participants

**63** Social Determinant Tour participants

**808**



Professionals engaged in 5 initiatives

**484**



women with behavioral health concerns received services as a result of the Perinatal Behavioral Health Initiative

## Our impact

Each year, roughly 15 kindergarten classrooms worth of children die in the St. Louis area before their first birthday. Generate Health STL mobilizes and unites the region through 5 initiative areas to improve the health of moms and babies.

The Maternal and Infant Health initiative, together with FLOURISH St. LOUIS, is working in new ways to decrease infant mortality in our region.

The Perinatal Behavioral Health Initiative seeks to screen and refer a portion of the estimated 2,000 – 3,000 pregnant women and new moms in St. Louis city for perinatal mood and anxiety disorders.

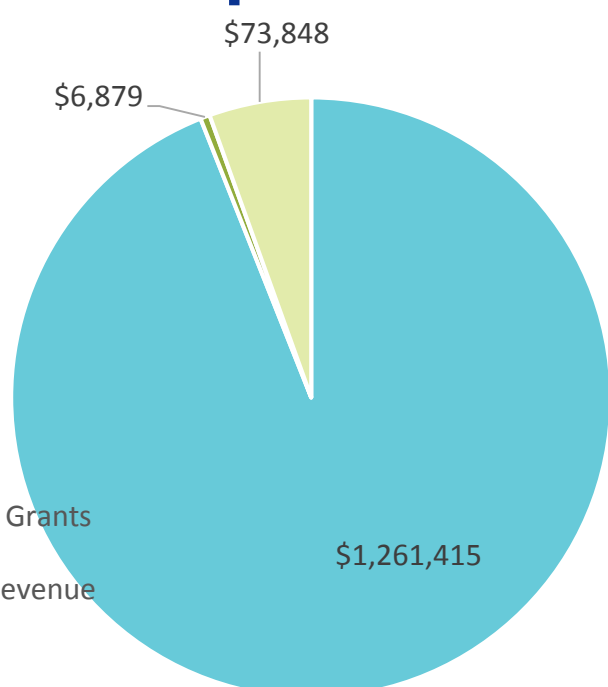
The Immunization Initiative convenes health departments, social service providers, school nurses and pharmaceutical companies to plan, align and unite the region around the critical issue of vaccination.

Through our Health Equity Initiative, the Social Determinants Tour takes participants to impoverished neighborhoods in St. Louis to learn about the social determinants of health and how they impact those living in these communities.

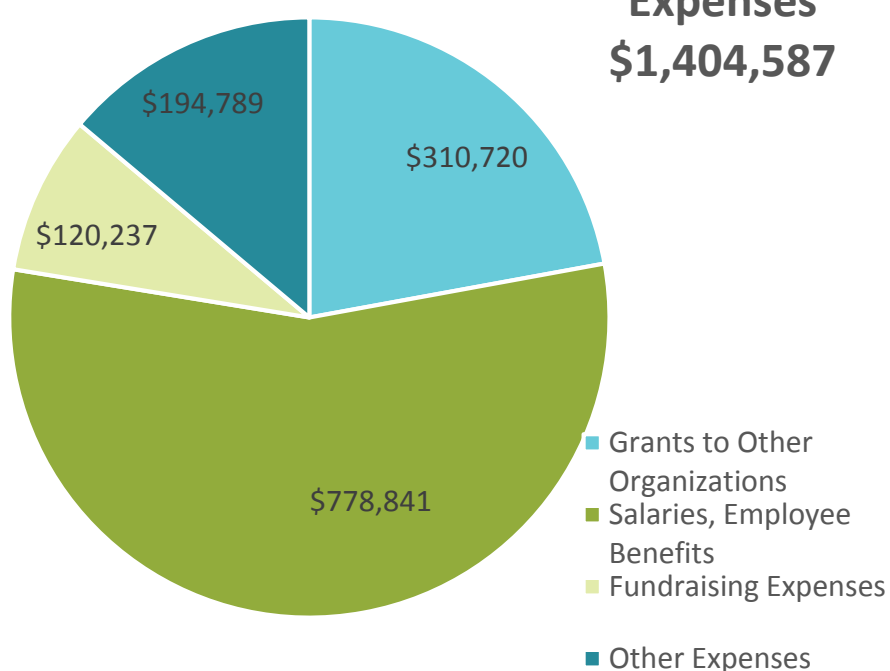
The Making Change Happen Leadership Academy empowers parents to be advocates for themselves, their families and their neighborhoods.

## Financial Snapshot

**Revenue**  
\$1,342,142



**Expenses**  
\$1,404,587



Revenue for program expenses incurred in 2016 was recorded in prior years thereby showing a deficit in 2016.

## Uniting the Region

Generate Health's strength comes from the involvement of our membership, partners and the community in the St. Louis region.

We could not be an effective voice for moms and babies without the action of those supporting our mission.

**152 Donors**

**133 Advocacy Actions**

**646 Community Members Involved**

Generate Health's mission is to improve birth outcomes, promote healthy families, and build healthy communities by uniting and mobilizing the St. Louis Region.

We accelerate positive change in our region by:

- Understanding our community's needs
- Educating service providers and community leaders
- Advocating for positive policy change
- Mobilizing the region around our most pressing maternal and child issues

Want to be involved? Learn more on our website!

[Generatehealthstl.org](http://Generatehealthstl.org)



**Generate Health**

(314) 880-5719

1300 Hampton Avenue,  
Ste. 111  
Saint Louis, MO 63139